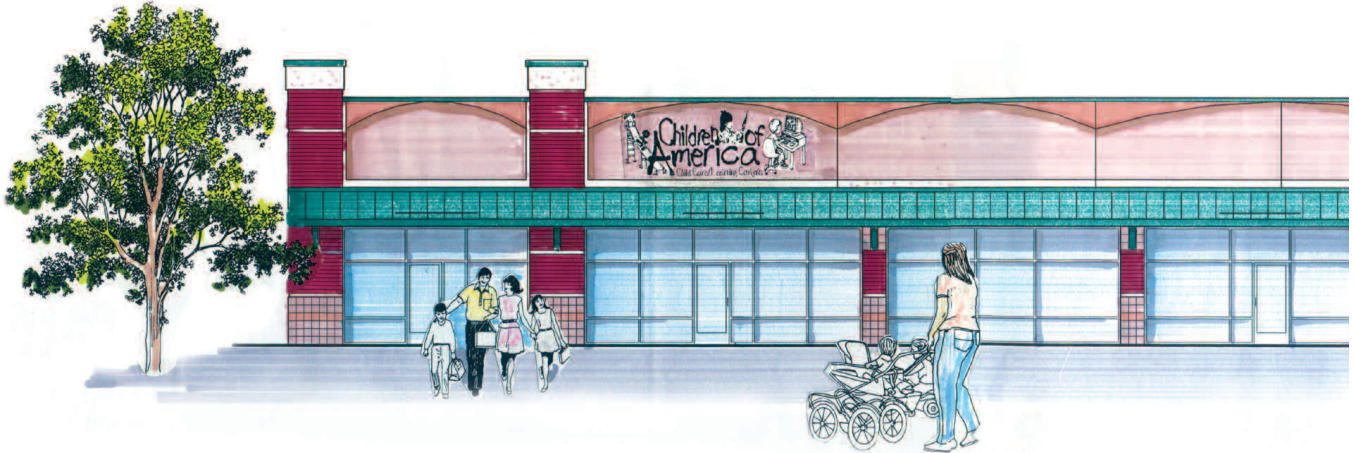


## Foresight For Prime Sites: Quest For Top-Rate Development Properties

At Children of America®, we're seeking prime real estate in dynamic regional markets for continued expansion of our Children of America® Educational Childcare Centers. As one of the nation's most experienced and fastest-growing commercial real estate investment, and development firms, we're focused on areas that are enjoying explosive growth fueled by innovative and energetic high-tech companies, corporate giants, and international companies seeking to establish a presence. The following listings detail the requirements for potential in-line site selections.

### Site & Submission Requirements: In-Line Space (End Cap Preferred)



*In addition to appropriate zoning, the following criteria must be met:*

Building size: 8,500 to 10,000 square feet

Parking spaces: 25\*

Playground: Outdoor, contiguous to site; minimum 4,000 square feet

Elevation change: Maximum 8 feet across site

Traffic count: 15,000 minimum per day. Ease of egress and ingress

#### Demographics:

3,000 minimum, age 4 and under in a three mile radius

Median income: \$60,000 within a three mile radius

#### Submission Requirements:

Site plan

Set of demographics

Area street map

Zoning & proffers\*\*

Asking lease rate

\*May vary by county and municipality. \*\*Prefer sites with childcare "by right."

For More Information,  
Please Contact Us At:  
1-800-821-0561  
or e-mail us at:  
[info@childrenofamerica.com](mailto:info@childrenofamerica.com)



©2008 Children Of America®, All Rights Reserved. Member, International Council of Shopping Centers (ICSC)

**CHILDCARE AS IT SHOULD BE!**